



ROOM DARKENING FABRICS



PRODUCT CATEGORY
Plains
MATERIAL
100% polyester
FABRIC WIDTH
200 cm

NORTH BO

100937

A room darkening fabric with volume potential

With a subtle melange look and plenty of textile feel, NORTH BO is a value-added fabric, yet highly accessible. The colour scale is in bestselling naturals with a single dark blue addition, and 8 choices in total.

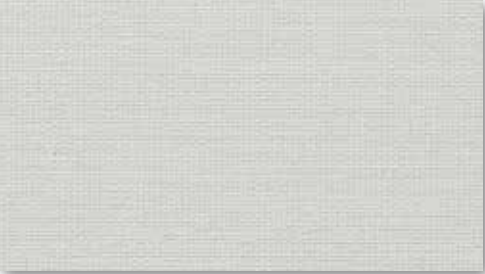
The white backing of NORTH BO translates to high solar reflection values, and NORTH BO is an easy choice as a volume fabric in most collections.

The turnability of NORTH BO will contribute to minimum waste, and subject to conditions the fabric is available as vertical and panel.

Similar to much of the product range, NORTH BO is labelled for sustainability with Oekotex and Five Zero Green.

Product Specification

Design	Studio Almedahls
Product application	
Panels	Yes
Verticals	Yes
Application areas	
Monitor workplace	Yes
Physical properties	
Light transmission	Blackout
Finish	Pigmented acrylic coating
Backing	White
Width cm	200 cm
Width inch	78.7 inch
Weight	290 g/m²
Thickness	0,4 mm
Shrinkage	Max 1%
Approx. roll length	25 lm
Turnable fabric	Yes
Performance characteristics	
Openness faktor	-
Alfa value	-
Flame retardant	No
Light fastness	Min. 6-7
Disinfectable	No
Sustainability profile	
Oeko-Tex	Yes
Five Zero Green	Yes
Recycled	No
PVC free	Yes
REACH compliant	Yes



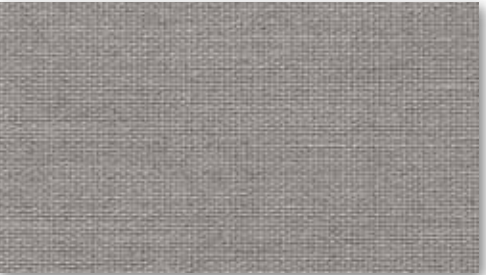
NORTH BO 100937-0008



NORTH BO 100937-0539



NORTH BO 100937-0695



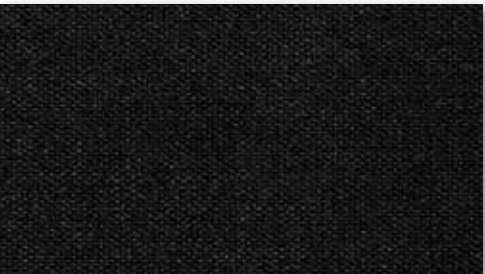
NORTH BO 100937-0537



NORTH BO 100937-0694



NORTH BO 100937-0538



NORTH BO 100937-0009



NORTH BO 100937-0237

- A highly accessible solar protection fabric with surprising value-add
- Designed to work as a volume fabric in most collections
- Sustainability labelled

Optical Information Solar Values

Article number	Colour	Rs %	Ts %	As %
100937-0008	white	75	0	25
100937-0009	black	75	0	25
100937-0237	darkblue	75	0	25
100937-0537	grey	75	0	25
100937-0538	darkgrey	75	0	25
100937-0539	lightgrey	75	0	25
100937-0694	beige	75	0	25
100937-0695	ecru	75	0	25



PRODUCT CATEGORY

Plains

MATERIAL

100% polyester

FABRIC WIDTH

200 cm / 230 cm / 300 cm

POLAR BO

100002/101773/100036

Versatile, room darkening fabric with colour- and waste management options

This fabric is a cornerstone in our black-out range. With a strong textile feel along with a wide colour palette from the hands of the Almedahls Design Studio, POLAR BO is an accessible, high-volume room darkening fabric.

The solar reflection values of POLAR BO are generally high thanks to the white backing on the fabric. Moreover, the 3 widths of POLAR BO provide flexibility in waste management and for projects with large window surfaces.

POLAR BO is certified in our sustainability programme with Oekotex and Five Zero Green. Also, POLAR BO may be installed as verticals and panels subject to conditions.





POLAR BO 100036-0088



POLAR BO 100036-0008



POLAR BO 100036-0502



POLAR BO 100036-0901



POLAR BO 100036-0603



POLAR BO 100036-0501



POLAR BO 100036-0602

Product Specification

Design	Studio Almedahls
Product application	
Panels	Yes
Verticals	Yes
Application areas	
Monitor workplace	Yes
Physical properties	
Light transmission	Blackout
Finish	Pigmented acrylic coating
Backing	White
Width cm	200/230/300 cm
Width inch	78.7/90.6/118.1 inch
Weight	345/345/325 g/m²
Thickness	0,44 mm
Shrinkage	Max 1%
Approx. roll length	25/20/30 lm
Turnable fabric	Yes
Performance characteristics	
Openness faktor	-
Alfa value	-
Flame retardant	No
Light fastness	Min. 6-7
Disinfectable	Yes
Sustainability profile	
Oeko-Tex	Yes
Five Zero Green	Yes
Recycled	No
PVC free	Yes
REACH compliant	Yes

- A versatile high-volume room darkening fabric
- 3 widths and seven to twenty colours
- Suitable for verticals and panels and available in light filtering version

Optical Information Solar Values

Article number	Colour	Rs %	Ts %	As %	Article number	Colour	Rs %	Ts %	As %
100002-0008	white	75	0	25	101773-0008	white	75	0	25
100002-0009	black	75	0	25	101773-0009	black	75	0	25
100002-0088	optical white	75	0	25	101773-0088	optical white	75	0	25
100002-0224	darkblue	75	0	25	101773-0511	lightgrey	75	0	25
100002-0239	lightblue	75	0	25	101773-0519	darkgrey	75	0	25
100002-0330	palegreen	75	0	25	101773-0602	sand	75	0	25
100002-0331	greengreen	75	0	25	101773-0649	lightyellow	75	0	25
100002-0511	lightgrey	75	0	25	100036-0008	white	75	0	25
100002-0519	darkgrey	75	0	25	100036-0088	optical white	75	0	25
100002-0524	grey	75	0	25	100036-0501	lightgrey	75	0	25
100002-0541	light greyblue	75	0	25	100036-0502	darkgrey	75	0	25
100002-0601	warm beige	75	0	25	100036-0602	sand	75	0	25
100002-0602	sand	75	0	25	100036-0603	lightyellow	75	0	25
100002-0603	pale terracotta	75	0	25	100036-0901	black	75	0	25
100002-0648	lightbeige	75	0	25					
100002-0649	lightyellow	75	0	25					
100002-0651	lightbeige	75	0	25					
100002-0652	beige	75	0	25					
100002-0655	brown	75	0	25					
100002-0710	palepurple	75	0	25					



PRODUCT CATEGORY

Plains

MATERIAL

100% polyester

FABRIC WIDTH

300 cm

COVER BO

100037

Accessible room darkening fabric in width and best-selling colours

This room darkening fabric is chosen for its distinct woven tactility combined with the flexibility of width. The weave brings a smooth and exclusive feel, and COVER BO is presented in four best-selling colours.

Like other black-outs from Almedahls with white backing, the solar reflection from COVER BO will significantly reduce need for cooling whilst contributing room darkening.

By virtue of its accessibility, COVER BO will often generate high volumes in a solar protection fabric range.

COVER BO is available in 3 metre width which often grants benefits from reduced waste, and flexibility in projects with large window surfaces.

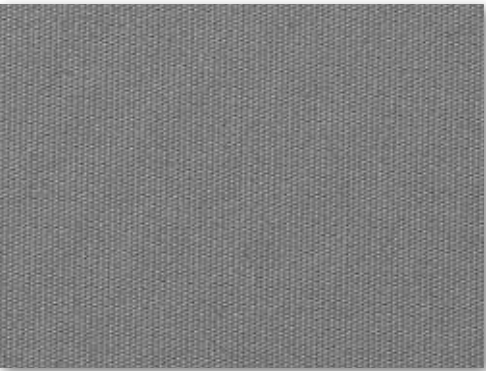
Product Specification

Design	Studio Almedahls
Product application	
Panels	No
Verticals	No
Application areas	
Monitor workplace	Yes
Physical properties	
Light transmission	Blackout
Finish	Pigmented acrylic coating
Backing	White
Width cm	300 cm
Width inch	118.1 inch
Weight	410 g/m²
Thickness	0,44 mm
Shrinkage	Max 1%
Approx. roll length	30 lm
Turnable fabric	Yes
Performance characteristics	
Openness faktor	-
Alfa value	-
Flame retardant	No
Light fastness	Min. 6
Disinfectable	Yes
Sustainability profile	
Oeko-Tex	Yes
Five Zero Green	Yes
Recycled	No
PVC free	Yes
REACH compliant	Yes

- Woven tactility with a smooth feel
- An accessible high-volume room darkening fabric
- 3 metre width



COVER BO 100037-0008



COVER BO 100037-0501



COVER BO 100037-0601



COVER BO 100037-0901

Optical Information Solar Values

Article number	Colour	Rs %	Ts %	As %
100037-0008	white	75	0	25
100037-0501	grey	75	0	25
100037-0601	beige	75	0	25
100037-0901	black	75	0	25



PRODUCT CATEGORY

Plains with Personality

MATERIAL

100% polyester

FABRIC WIDTH

200 cm

GLITTER BO
101779

Plain with Personality with
touch of glamour but also
warmth and technique

The metallic, sparkly front of GLITTER BO associates with glamour, but also with warmth and technique. GLITTER BO even offers tactility from the woven base fabric. The backing is plain white, and the front is found in white, light gold, silver, and copper for a contemporary look. A genuine Plain with Personality.

GLITTER BO is particularly suited in spaces where an added decorative effect at night is sought in combination with room darkening, and high solar reflection.

Subject to conditions, GLITTER BO is offered as verticals and panels, and embraces the environment with the Five Zero Green labelling unique to Almedahls.

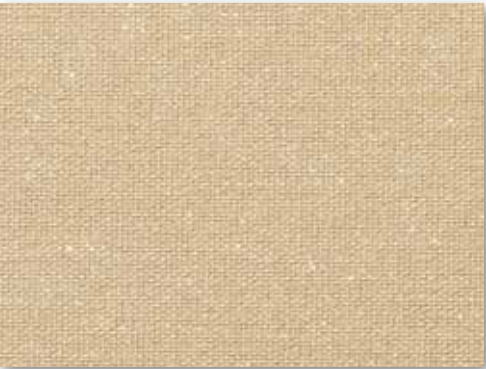
Product Specification

Design	Studio Almedahls
Product application	
Panels	Yes
Verticals	Yes
Application areas	
Monitor workplace	Yes
Physical properties	
Light transmission	Blackout
Finish	Pigmented acrylic coating
Backing	White
Width cm	200 cm
Width inch	78.7 inch
Weight	305 g/m²
Thickness	0,45 mm
Shrinkage	Max 1%
Approx. roll length	30 lm
Turnable fabric	Yes
Performance characteristics	
Openness faktor	-
Alfa value	-
Flame retardant	No
Light fastness	Min. 7
Disinfectable	Yes
Sustainability profile	
Oeko-Tex	Yes
Five Zero Green	Yes
Recycled	No
PVC free	Yes
REACH compliant	Yes

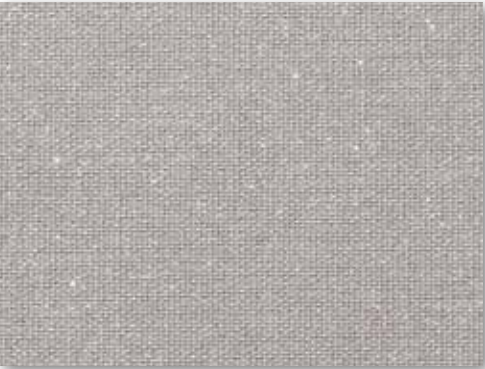
- A black-out Plain with Personality from a metallic, sparkly shimmer
- Four metallic colours and full technical performance
- Also available in light filtering version



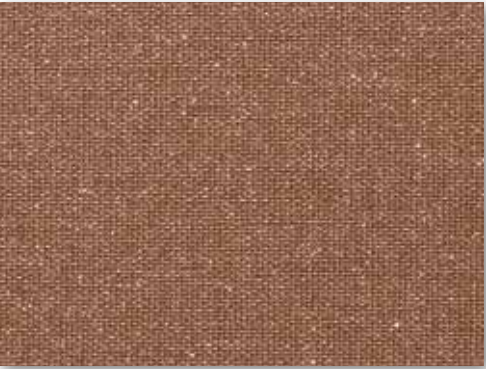
GLITTER BO 101779-0886



GLITTER BO 101779-0442



GLITTER BO 101779-0543



GLITTER BO 101779-0605

Optical Information Solar Values

Article number	Colour	Rs %	Ts %	As %
101779-0442	gold	75	0	25
101779-0543	silver	75	0	25
101779-0605	copper	75	0	25
101779-0886	white	75	0	25



PRODUCT CATEGORY

Plains with Personality

MATERIAL

100% polyester

FABRIC WIDTH

200 cm / 230 cm

EXCELLENCE BO

101767/101770

A Plain with Personality in handpicked colours and 2 widths

The EXCELLENCE fabric is one of our most prolific plains. EXCELLENCE BO offers a dense texture in the fabric, and a highly textile feel. A contradiction to the unfaceted fabrics which are occasionally encountered, we call these value-added uni-colours Plains with Personality.

EXCELLENCE BO is standard in 20 colours handpicked by the Almedahls Design Studio. Further, the fabric comes in 2 widths.

The white backing of EXCELLENCE BO contributes to high solar reflection. The fabric is part of our Hygiene Concept and may certifiably be disinfected with alcohol solvent in care spaces. We recommend EXCELLENCE BO for digital printing.

Available as vertical and panel.



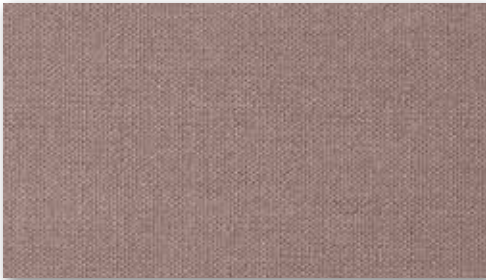
EXCELLENCE BO 101767-0088/101770-0088



EXCELLENCE BO 101767-0655



EXCELLENCE BO 101767-0244



EXCELLENCE BO 101767-0534



EXCELLENCE BO 101767-0008/101770-0008



EXCELLENCE BO 101767-0437



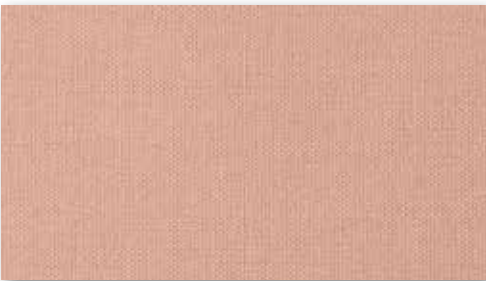
EXCELLENCE BO 101767-0537



EXCELLENCE BO 101767-0535



EXCELLENCE BO 101767-0661



EXCELLENCE BO 101767-0141



EXCELLENCE BO 101767-0246



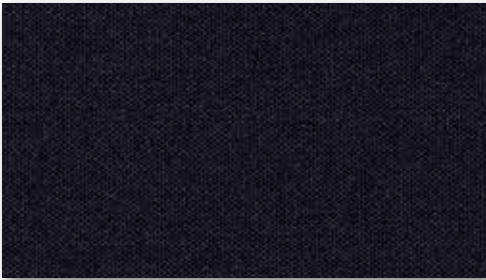
EXCELLENCE BO 101767-0656



EXCELLENCE BO 101767-0658



EXCELLENCE BO 101767-0142



EXCELLENCE BO 101767-0245



EXCELLENCE BO 101767-0657



EXCELLENCE BO 101767-0538



EXCELLENCE BO 101767-0536



EXCELLENCE BO 101767-0333



EXCELLENCE BO 101767-0009/101770-0009

Product Specification

Design	Studio Almedahls
Product application	
Panels	Yes
Verticals	Yes
Application areas	
Monitor workplace	Yes
Physical properties	
Light transmission	Blackout
Finish	Acrylic coating
Backing	White/Matching*
Width cm	200 cm/230 cm
Width inch	78.7 inch/90.6 inch
Weight	320 g/m²
Thickness	0,46 mm
Shrinkage	Max 1%
Approx. roll length	30 lm/25 lm
Turnable fabric	Yes
Performance characteristics	
Openness faktor	-
Alfa value	-
Flame retardant	No
Light fastness	Min. 5-6
Disinfectable	Yes
Sustainability profile	
Oeko-Tex	Yes
Five Zero Green	Yes
Recycled	No
PVC free	Yes
REACH compliant	Yes

*Matching backing on colour 0009

- Plain with Personality with a highly textile feel
- Two widths and 20 colours. Used in hygiene spaces and for digital printing
- Comes in light filtering and with flame retardant

Optical Information Solar Values

Article number	Colour	Rs %	Ts %	As %	Article number	Colour	Rs %	Ts %	As %
101767-0008	white	75	0	25	101767-0656	darkbeige	75	0	25
101767-0009	black	5	0	95	101767-0657	brown	75	0	25
101767-0088	optical white	75	0	25	101767-0658	beige	75	0	25
101767-0141	pink	75	0	25	101767-0661	ecru	75	0	25
101767-0142	bluepink	75	0	25	101770-0008	white	75	0	25
101767-0244	lightblue	75	0	25	101770-0009	black	5	0	95
101767-0245	darkblue	75	0	25	101770-0088	optical white	75	0	25
101767-0246	blue	75	0	25					
101767-0333	greengreen	75	0	25					
101767-0437	ochre	75	0	25					
101767-0534	greypink	75	0	25					
101767-0535	darkgrey	75	0	25					
101767-0536	greengrey	75	0	25					
101767-0537	greyblue	75	0	25					
101767-0538	lightgrey	75	0	25					
101767-0655	lightyellow	75	0	25					



PRODUCT CATEGORY
Design Decorated

MATERIAL
100% polyester

FABRIC WIDTH
200 cm

ASTRA BO

101380

For a restful sleeping environment, a classic room darkening Almedahls design

ASTRA BO, a depiction of a starry night sky, has been in the Almedahls collections for decades. ASTRA BO has been given a stylish update to make this true classic fit into more contemporary settings. The silver stars on a subtly textured black-out fabric creates a calm atmosphere and a restful sleeping environment, perfect for children’s rooms. ASTRA BO comes in two colours, a soothing grey, and a classic blue.

The black-out fabric keeps the bedroom dark, while the white backing provides excellent reflection values and make the room stay cool even when the morning sun is beaming in.

Astra BO has both Oekotex certification and Five Zero Green.

Product Specification

Design	Studio Almedahls
Product application	
Panels	Yes
Verticals	Yes
Application areas	
Monitor workplace	Yes
Physical properties	
Light transmission	Blackout
Finish	Pigmented acrylic coating
Backing	White
Width cm	200 cm
Width inch	78.7 inch
Weight	270 g/m²
Thickness	0,4 mm
Shrinkage	Max 1%
Approx. roll length	25 lm
Turnable fabric	Yes
Performance characteristics	
Openness faktor	-
Alfa value	-
Flame retardant	No
Light fastness	Min. 6-7
Disinfectable	Yes
Sustainability profile	
Oeko-Tex	Yes
Five Zero Green	Yes
Recycled	No
PVC free	Yes
REACH compliant	Yes

- A night sky with silver stars – a true classic
- The black-out with white backing keeps the room dark and cool
- Perfect for children’s rooms



ASTRA BO 101380-0005



ASTRA BO 101380-0002

Optical Information Solar Values

Article number	Colour	Rs %	Ts %	As %
101380-0002	darkblue	75	0	25
101380-0005	grey	75	0	25



PRODUCT CATEGORY

Plains with Personality

MATERIAL

100% polyester

FABRIC WIDTH

230 cm

PANAMA BO
101772

Giving depth and textile feel,
a genuine Plain with Personality
with matching backing

The basket weave of PANAMA BO enriches the fabric with depth and plenty of textile feel. The surface and colouring technique produces a melange structure which overall makes for a highly enriched fabric. The colour scale of PANAMA BO is warm and rustic with 11 choices.

PANAMA BO is the only black-out fabric in the range with matching backing colour. Hence, the fabric is used where the design requires a matching colour personality also from the façade of a building.

The fabric comes as vertical and panel, subject to colour and volume conditions.

PANAMA BO is oekotex and Five Zero Green labelled for sustainability.

Product Specification

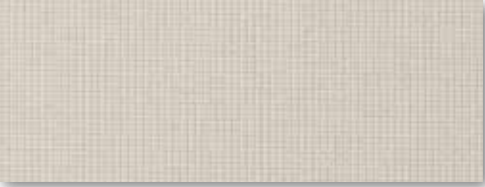
Design	Studio Almedahls
Product application	
Panels	Yes
Verticals	Yes
Application areas	
Monitor workplace	Yes
Physical properties	
Light transmission	Blackout
Finish	Pigmented acrylic coating
Backing	Matching
Width cm	230 cm
Width inch	90.6 inch
Weight	380 g/m²
Thickness	0,48 mm
Shrinkage	Max 1%
Approx. roll length	20 lm
Turnable fabric	Yes
Performance characteristics	
Openness faktor	-
Alfa value	-
Flame retardant	No
Light fastness	Min. 6
Disinfectable	Yes
Sustainability profile	
Oeko-Tex	Yes
Five Zero Green	Yes
Recycled	No
PVC free	Yes
REACH compliant	Yes



PANAMA BO 101772-0088



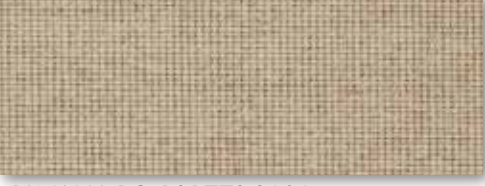
PANAMA BO 101772-0008



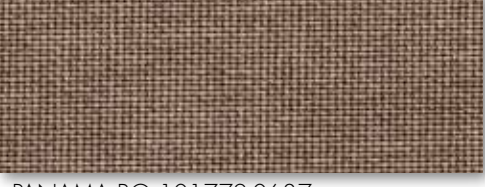
PANAMA BO 101772-0684



PANAMA BO 101772-0685



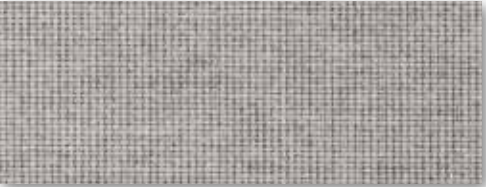
PANAMA BO 101772-0686



PANAMA BO 101772-0687



PANAMA BO 101772-0531



PANAMA BO 101772-0532



PANAMA BO 101772-0533



PANAMA BO 101772-0908



PANAMA BO 101772-0233

- An enriched designer black-out with tactility and depth
- Used where design requires matching colours to the street
- Suitable for verticals and panels and available in light filtering version

Optical Information Solar Values

Article number	Colour	Rs %	Ts %	As %
101772-0008	white	75	0	25
101772-0088	optical white	75	0	25
101772-0233	darkblue	15	0	85
101772-0531	lightgrey	70	0	30
101772-0532	grey	60	0	40
101772-0533	darkgrey	15	0	85
101772-0684	ecru	70	0	30
101772-0685	lightbeige	70	0	30
101772-0686	beige	60	0	40
101772-0687	darkbeige	60	0	40
101772-0908	black	5	0	95



PRODUCT CATEGORY

Plains with Personality

MATERIAL

100% polyester

FABRIC WIDTH

200 cm

UP BO
101780

Uncompromising black-out with
aluminium backing. A subtle
lustre with design feel

UP BO is a soft and smooth black-out fabric with a subtle lustre. The discreet woven texture has slight natural irregularities which gives life to the surface. The colour range consists of versatile neutrals from bright white to warm beige and greys to black, with an addition of a classic bedroom blue.

The aluminium backing allows for a thin fabric and a high degree of black-out. Developed for cassette systems with limited space and skylight windows, UP BO is part of a growing family of fabrics for roof windows and cassette systems.

As an extension of Almedahls’ commitment to a sustainable environment, UP BO is Five Zero Green labelled.

Product Specification

Design Studio Almedahls

Product application

Panels No

Verticals No

Application areas

Monitor workplace Yes

Physical properties

Light transmission Blackout

Finish Acrylic coating

Backing Aluminum

Width cm 200 cm

Width inch 78.7 inch

Weight 260 g/m²

Thickness 0,38 mm

Shrinkage Max 1%

Approx. roll length 30 lm

Turnable fabric Yes

Performance characteristics

Openness faktor -

Alfa value -

Flame retardant No

Light fastness Min. 6

Disinfectable Yes

Sustainability profile

Oeko-Tex Yes

Five Zero Green Yes

Recycled No

PVC free Yes

REACH compliant Yes



UP BO 101780-0008



UP BO 101780-0501



UP BO 101780-0502

- A smooth black-out with life in the surface
- High degree of room darkening from aluminium backing
- Part of a family of fabrics particularly for roof windows and cassette systems



UP BO 101780-0601



UP BO 101780-0201

Optical Information Solar Values

Article number	Colour	Rs %	Ts %	As %
101780-0008	white	50	0	50
101780-0201	darkblue	50	0	50
101780-0501	lightgrey	50	0	50
101780-0502	darkgrey	50	0	50
101780-0601	beige	50	0	50



PRODUCT CATEGORY

Plains with Texture

MATERIAL

100% polyester

FABRIC WIDTH

200 cm

TITAN BO

100114

A technical black-out fabric with lustrous metallic texture

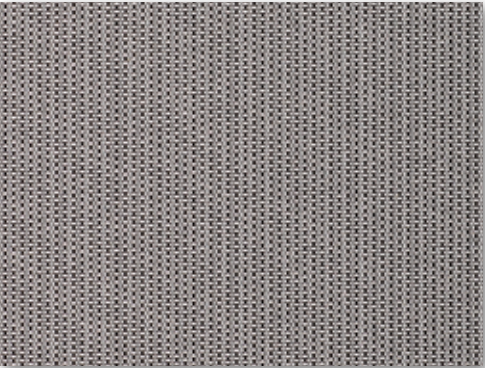
The discriminating feature of TITAN BO is the lustrous metallic surface and the conspicuous texture in the weave. There are five interpretations of metal in the TITAN BO colour palette including copper, gold, and silver. Other than merging into a rustic interior decoration trend, TITAN BO is noted for its aluminium backing and 0.3 mm thickness.

Aluminium backing makes for an uncompromising black-out effect whilst low thickness makes TITAN BO highly applicable in cassette or roof window systems.

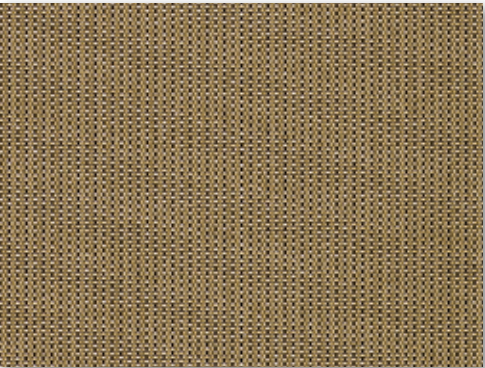
TITAN BO is in our Hygiene Concept and may certifiably be disinfected with alcohol solvents. In addition, the fabric is Five Zero Green labelled which entails net zero carbon-dioxide emission in production.

Product Specification

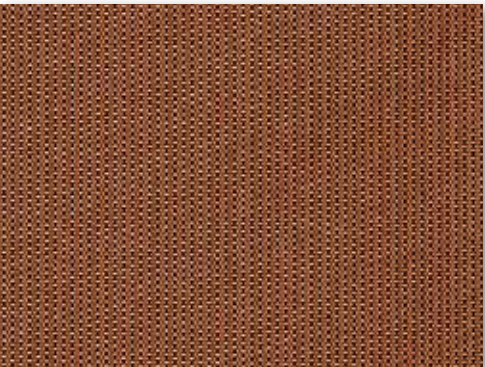
Design	Studio Almedahls
Product application	
Panels	No
Verticals	No
Application areas	
Monitor workplace	Yes
Physical properties	
Light transmission	Blackout
Finish	Acrylic coating
Backing	Aluminum
Width cm	200 cm
Width inch	78.7 inch
Weight	245 g/m²
Thickness	0,3 mm
Shrinkage	Max 1%
Approx. roll length	30 lm
Turnable fabric	Yes
Performance characteristics	
Openness faktor	-
Alfa value	-
Flame retardant	No
Light fastness	Min. 5-6
Disinfectable	Yes
Sustainability profile	
Oeko-Tex	Yes
Five Zero Green	Yes
Recycled	No
PVC free	Yes
REACH compliant	Yes



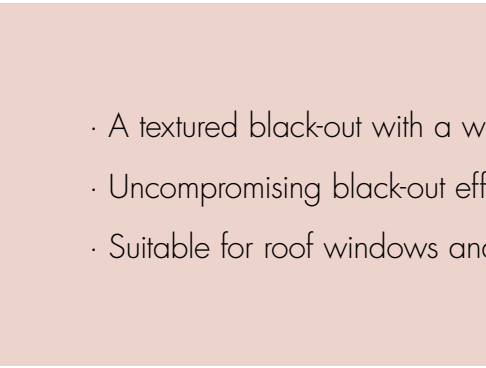
TITAN BO 100114-0005



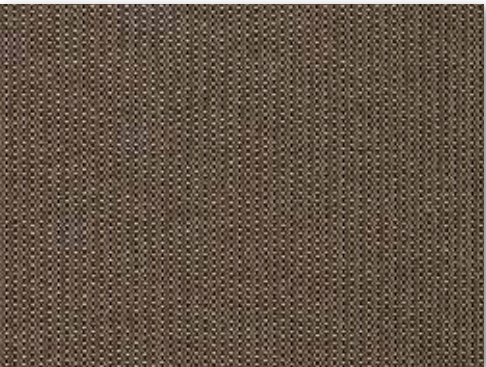
TITAN BO 100114-0402



TITAN BO 100114-0604



TITAN BO 100114-0601



TITAN BO 100114-0602

- A textured black-out with a warm metallic glow from the colour scale
- Uncompromising black-out effect from aluminium backing
- Suitable for roof windows and cassette systems

Optical Information Solar Values

Article number	Colour	Rs %	Ts %	As %
100114-0005	silver	50	0	50
100114-0402	gold	50	0	50
100114-0601	beige	50	0	50
100114-0602	brown	50	0	50
100114-0604	copper	50	0	50



PRODUCT CATEGORY

Plains with Texture

MATERIAL

66% cotton/34% polyester

FABRIC WIDTH

200 cm

TECHNO BO
100112

A room darkening texture with
refinement and technique

The tactility of room darkening Plain with Texture TECHNO BO comes from the use of different yarns in warp and weft. The texture gives a sense of depth and refinement to the fabric which comes from the exquisite processing. TECHNO BO doubles as both a room darkening and light filtering fabric in 4 neutral colour tones which bring an intriguing melange effect with a sense of motion.

TECHNO BO has an aluminium backing which combines uncompromising black-out effect with a thinness which makes TECHNO BO eligible for cassette or roof window systems.

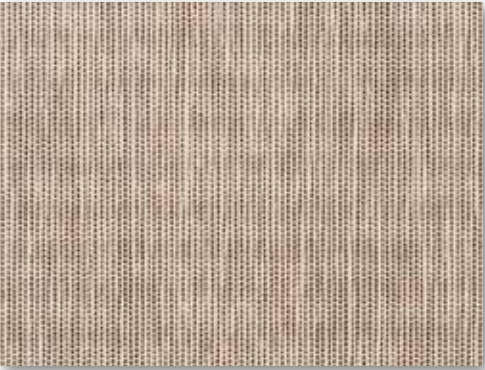
Subject to conditions, TECHNO BO is offered as verticals and panels.
Environmentally the fabric is Five Zero Green labelled.

Product Specification

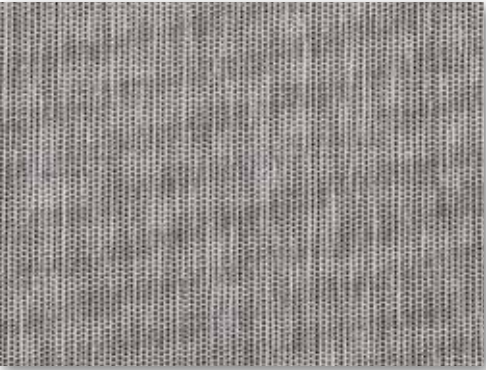
Design	Studio Almedahls
Product application	
Panels	Yes
Verticals	Yes
Application areas	
Monitor workplace	Yes
Physical properties	
Light transmission	Blackout
Finish	Acrylic coating
Backing	Aluminum
Width cm	200 cm
Width inch	78.7 inch
Weight	280 g/m²
Thickness	0,36 mm
Shrinkage	Max 1%
Approx. roll length	30 lm
Turnable fabric	Yes*
Performance characteristics	
Openness faktor	-
Alfa value	-
Flame retardant	No
Light fastness	Unbleached 5-6. Dyed 6
Disinfectable	No
Sustainability profile	
Oeko-Tex	Yes
Five Zero Green	Yes
Recycled	No
PVC free	Yes
REACH compliant	Yes

**Please note the direction of the fabric.
Appearance will change when fabric is turned.*

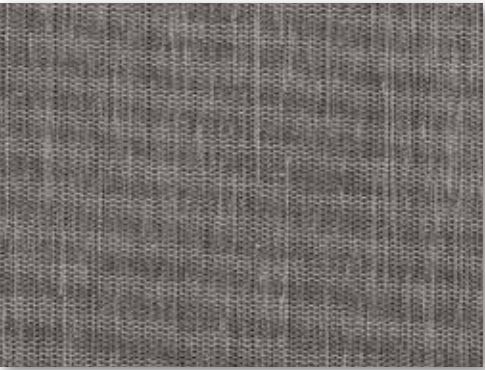
- A textured plain with depth from different yarns in warp and weft
- For everything room darkening including cassette or roof window systems
- Available in light filtering version



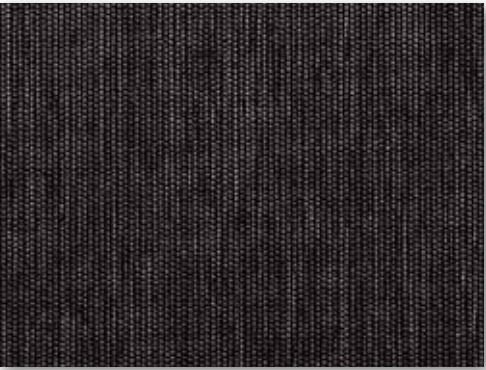
TECHNO BO 100112-0605



TECHNO BO 100112-0505



TECHNO BO 100112-0502



TECHNO BO 100112-0009

Optical Information Solar Values

Article number	Colour	Rs %	Ts %	As %
100112-0009	black	50	0	50
100112-0502	grey	50	0	50
100112-0505	lightgrey	50	0	50
100112-0605	nature	50	0	50



PRODUCT CATEGORY

Plains with Personality

MATERIAL

100% polyester

FABRIC WIDTH

200 cm

SCANDICA BO

100121

Aluminium backing for uncompromising black-out effect and melange surface effect

As part of our Plains with Personality category, SCANDICA BO offers an even surface in 3 neutral colours with a discreet melange effect.

SCANDICA BO with aluminium backing has a natural place in any collection targeting cassette systems, roof windows and/or an uncompromising demand for black-out effect.

Four black-out fabrics with aluminium backing are now part of our standard offer, specifically developed for cassette or roof window systems.

Environmentally, SCANDICA BO is both Oekotex certified and part of the Five Zero Green sustainability programme, aiming at zero tolerances within water, waste, ingredients, energy, and air.

Product Specification

Design Studio Almedahls

Product application

Panels Yes

Verticals No

Application areas

Monitor workplace Yes

Physical properties

Light transmission Blackout

Finish Acrylic coating

Backing Aluminum

Width cm 200 cm

Width inch 78.7 inch

Weight 295 g/m²

Thickness 0,4 mm

Shrinkage Max 1%

Approx. roll length 30 lm

Turnable fabric Yes

Performance characteristics

Openness faktor -

Alfa value -

Flame retardant No

Light fastness Min. 5-6

Disinfectable Yes

Sustainability profile

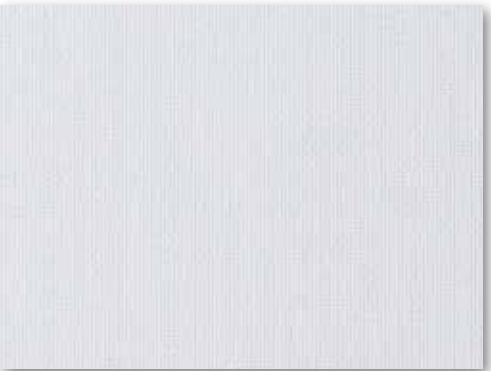
Oeko-Tex Yes

Five Zero Green Yes

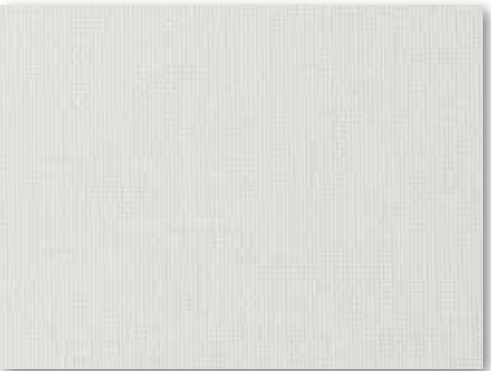
Recycled No

PVC free Yes

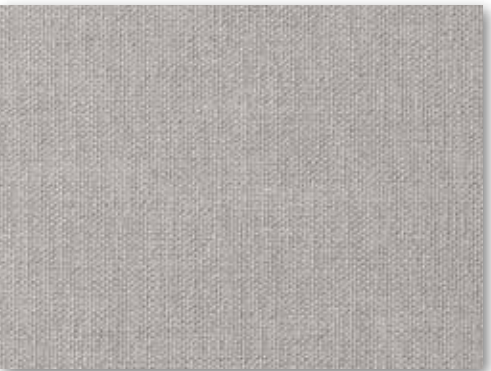
REACH compliant Yes



SCANDICA BO 100121-0088



SCANDICA BO 100121-0008



SCANDICA BO 100121-0523

- Even-surface black-out with discreet melange effect
- Aluminium backing for uncompromising black-out of exterior light
- Part of a family of fabrics particularly for roof windows and cassette systems

Optical Information Solar Values

Article number	Colour	Rs %	Ts %	As %
100121-0008	white	50	0	50
100121-0088	optical white	50	0	50
100121-0523	grey	50	0	50



PRODUCT CATEGORY

Plains with Personality

MATERIAL

100% polyester

FABRIC WIDTH

195 cm

SATIN BO
100109

A genuine Plain with Personality
from micro-sparkles with radiance
and technical profile

SATIN BO belongs to the Plains with Personality family. The personality of SATIN BO comes from light reflections which create a subtle, yet noticeable, radiance at a distance as well as extra depth to the eight colours in the scale.

With its technical appearance and a thickness of 0.3 mm, some are likely to assume that SATIN BO is aimed at cassette systems and roof windows. Yet, the appeal of the fabric is much wider with a premium feel and a highly reflecting white backing.

SATIN BO has both Oekotex certification and our Five Zero Green label. What is more, the fabric is tested for use in hygiene spaces.

Product Specification

Design Studio Almedahls

Product application

Panels No

Verticals No

Application areas

Monitor workplace Yes

Physical properties

Light transmission Blackout

Finish Acrylic coating

Backing White

Width cm 195 cm

Width inch 76.8 inch

Weight 255 g/m²

Thickness 0,3 mm

Shrinkage Max 1%

Approx. roll length 30 lm

Turnable fabric Yes

Performance characteristics

Openness faktor -

Alfa value -

Flame retardant No

Light fastness Min. 6

Disinfectable Yes

Sustainability profile

Oeko-Tex Yes

Five Zero Green Yes

Recycled No

PVC free Yes

REACH compliant Yes



SATIN BO 100109-0008



SATIN BO 100109-0226



SATIN BO 100109-0616



SATIN BO 100109-0218



SATIN BO 100109-0535



SATIN BO 100109-0906



SATIN BO 100109-0509



SATIN BO 100109-0513

- Black-out with subtle, yet noticeable, radiance at a distance
- Dense weave with premium feel and thinness of 0.3 mm
- Applied beyond cassette systems with white backing

Optical Information Solar Values

Article number	Colour	Rs %	Ts %	As %
100109-0008	white	75	0	25
100109-0218	darkblue	75	0	25
100109-0226	blue	75	0	25
100109-0509	grey	75	0	25
100109-0513	petrol	75	0	25
100109-0535	silver	75	0	25
100109-0616	greybeige	75	0	25
100109-0906	black pearl	75	0	25



PRODUCT CATEGORY

Design Decorated

MATERIAL

100% polyester

FABRIC WIDTH

195 cm

SNOOZE BO
100689

Design black-out for bedrooms with
premium look and premium feel

Everybody knows. Sleep is better in the dark. Moreover, sleep is better in a temperate room.

Introducing Design Decorated black-out fabric SNOOZE BO. A sibling of ASTRA BO and developed to deliver a restful sleeping environment with design edge. The fabric is dense and thin. The scattered snooze symbols appear almost with a mother of pearl effect for a changing light reflection depending on the angle of view. A premium look and a premium feel.

The white backing of SNOOZE BO will reflect the majority of the incoming solar radiation, and given a thinness of 0.3 mm, the fabric may be mounted in any system including cassettes and roof windows.

Product Specification

Design	Studio Almedahls
Product application	
Panels	No
Verticals	No
Application areas	
Monitor workplace	Yes
Physical properties	
Light transmission	Blackout
Finish	Acrylic coating
Backing	White
Width cm	195 cm
Width inch	76.8 inch
Weight	290 g/m²
Thickness	0,3 mm
Shrinkage	Max 1%
Approx. roll length	30 lm
Turnable fabric	Yes*

Performance characteristics	
Openness faktor	-
Alfa value	-
Flame retardant	No
Light fastness	Min. 6
Disinfectable	Yes

Sustainability profile	
Oeko-Tex	Yes
Five Zero Green	Yes
Recycled	No
PVC free	Yes
REACH compliant	Yes

**Please note the direction of the fabric.
Appearance will change when fabric is turned.*

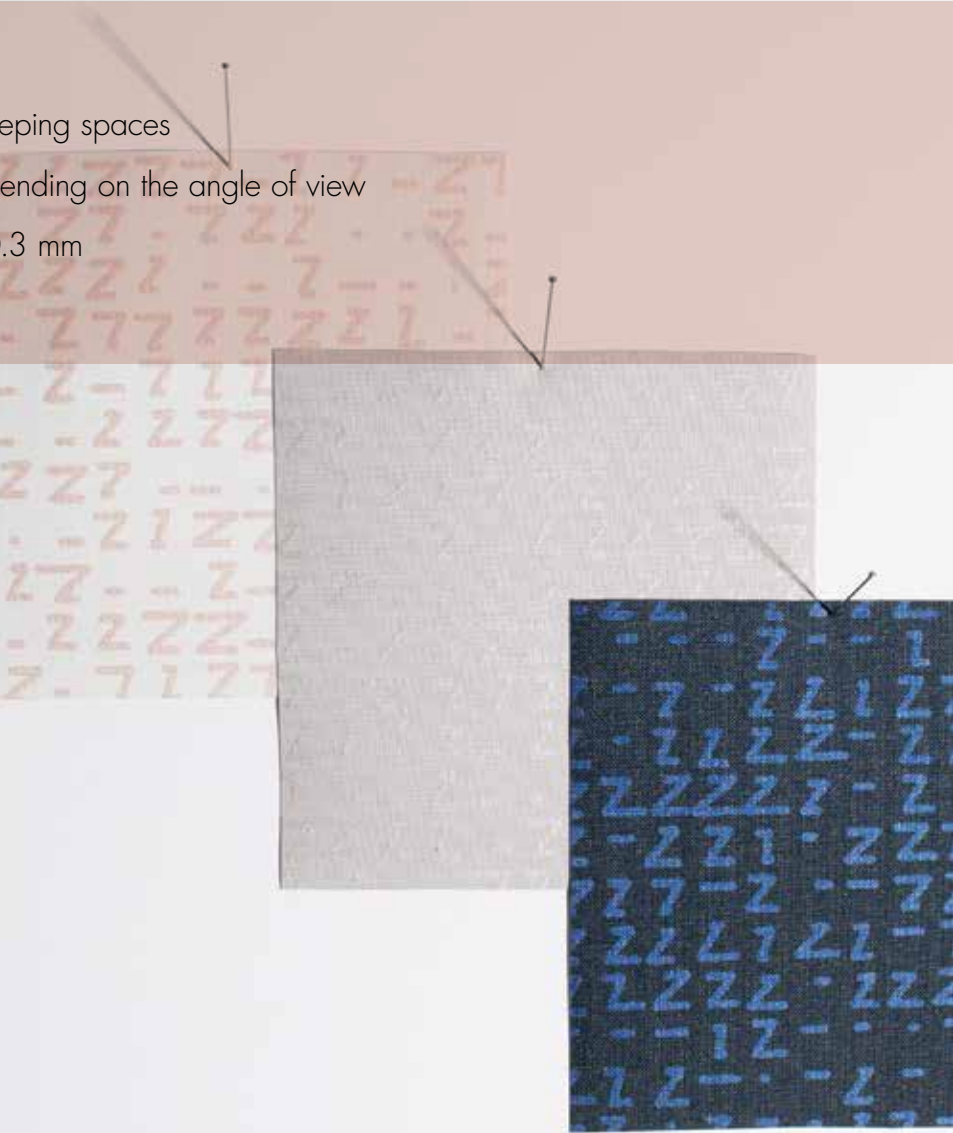
- Black-out Design Decorated fabric for sleeping spaces
- Design with changing light reflection depending on the angle of view
- Suitable for any system with thinness of 0.3 mm



SNOOZE BO 100689-0005

Optical Information Solar Values

Article number	Colour	Rs %	Ts %	As %
100689-0005	grey	75	0	25





PRODUCT CATEGORY

Plains with Texture

MATERIAL

100% polyester

FABRIC WIDTH

195 cm

STICKAN BO
100111

A restful yet vivid expression
on a technical black-out

With its slightly undulating stripes, room darkening Plain with Texture STICKAN BO has a timeless flow. The fabric has a clean Scandinavian vibe and creates a calm and restful atmosphere. STICKAN BO comes in a light beige and dark grey colourway. The fabric is also available in a light filtering version.

The smooth black-out fabric is developed to fit cassette systems and skylight windows. The fabric has a white backing, ensuring high reflection values for enhanced climate control.

STICKAN BO has both Oekotex and Five Zero Green label for sustainability. Also, the fabric is part of our Hygiene Concept and may certifiably be disinfected with alcohol solvent in care spaces.

Product Specification

Design	Studio Almedahls
Product application	
Panels	Yes
Verticals	Yes
Application areas	
Monitor workplace	Yes
Physical properties	
Light transmission	Blackout
Finish	Acrylic coating
Backing	White
Width cm	195 cm
Width inch	76.8 inch
Weight	290 g/m²
Thickness	0,3 mm
Shrinkage	Max 1%
Approx. roll length	30 lm
Turnable fabric	Yes*

Performance characteristics	
Openness faktor	-
Alfa value	-
Flame retardant	No
Light fastness	Min. 6
Disinfectable	Yes

Sustainability profile	
Oeko-Tex	Yes
Five Zero Green	Yes
Recycled	No
PVC free	Yes
REACH compliant	Yes

**Please note the direction of the fabric.
Appearance will change when fabric is turned.*

- A classic with a calm and restful, yet vivid, expression
- Particularly suited for cassette and skylight and with white backing
- Also available in a light filtering version



STICKAN BO 100111-0068



STICKAN BO 100111-0559

Optical Information Solar Values

Article number	Colour	Rs %	Ts %	As %
100111-0068	beige	75	0	25
100111-0559	greyblack	75	0	25



PRODUCT CATEGORY

Plains with Texture

MATERIAL

100% polyester

FABRIC WIDTH

200 cm

NOVA BO

100105

Sustainable, textured black out with white backing

NOVA BO is in many ways a fabric from the heart of Almedahls. A plain with texture which makes the fabric stand out. A fully fledged environmental profile on top of which the fabric will deliver environmental benefits when used. The texture effect is rooted in subtle darker and lighter broken stripes which interact to form a structure similar to wood grain.

The backing is white and NOVA BO is only 0.4 mm thin.

With a base from recycled PET-bottles plus Oekotex and Five Zero Green label, NOVA BO probably offers the most comprehensive sustainability profile of any fabric. In addition, NOVA BO is tested for use in hygiene spaces.

Product Specification

Design	Studio Almedahls
Product application	
Panels	No
Verticals	No
Application areas	
Monitor workplace	Yes
Physical properties	
Light transmission	Blackout
Finish	Acrylic coating
Backing	White
Width cm	200 cm
Width inch	78.7 inch
Weight	290 g/m²
Thickness	0,4 mm
Shrinkage	Max 1%
Approx. roll length	30 lm
Turnable fabric	Yes*

Performance characteristics	
Openness faktor	-
Alfa value	-
Flame retardant	No
Light fastness	Min. 5-6
Disinfectable	Yes

Sustainability profile	
Oeko-Tex	Yes
Five Zero Green	Yes
Recycled	Yes
PVC free	Yes
REACH compliant	Yes

**Please note the direction of the fabric.
Appearance will change when fabric is turned.*

- A refined, textured black-out with wood grain structure
- White backing for high reflection and thinness of 0.4 mm
- The most far-reaching sustainability profile we offer with a recycled polyester base



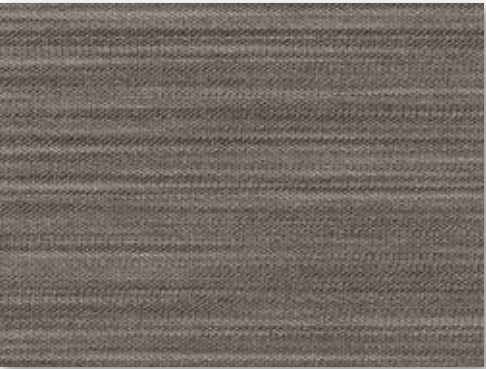
NOVA BO 100105-0602



NOVA BO 100105-0203



NOVA BO 100105-0503



NOVA BO 100105-0504

Optical Information Solar Values

Article number	Colour	Rs %	Ts %	As %
100105-0203	darkblue	75	0	25
100105-0503	lightgrey	75	0	25
100105-0504	darkgrey	75	0	25
100105-0602	ecru	75	0	25



PRODUCT CATEGORY

Plains with Texture

MATERIAL

100% Cotton

FABRIC WIDTH

200 cm

SHANTUNG BO

100022

An Almedahls classic in black-out texture from pure cotton

A timeless and advanced woven black-out texture, SHANTUNG BO is yet another of our classics made from natural material. In this case cotton fibre. The unevenly thick yarn in both warp and weft creates a lively expression with its distinct, yet random, criss-cross pattern. SHANTUNG has a sturdy construction and excels in interiors where raw and natural materials are preferred.

SHANTUNG BO comes in white, and the white backing makes for good solar reflection and -absorption properties.

Environmentally the fabric is Five Zero Green labelled which, amongst other things, means that the fabric is produced with net zero carbon-dioxide emission.

Product Specification

Design	Studio Almedahls
Product application	
Panels	No
Verticals	No
Application areas	
Monitor workplace	Yes
Physical properties	
Light transmission	Blackout
Finish	Acrylic coating
Backing	White
Width cm	200 cm
Width inch	78.7 inch
Weight	400 g/m²
Thickness	0,6 mm
Shrinkage	Max 1-2%
Approx. roll length	25 lm
Turnable fabric	Yes*

Performance characteristics	
Openness faktor	-
Alfa value	-
Flame retardant	No
Light fastness	Min. 7
Disinfectable	No

Sustainability profile	
Oeko-Tex	No
Five Zero Green	Yes
Recycled	No
PVC free	Yes
REACH compliant	Yes

**Please note the direction of the fabric.
Appearance will change when fabric is turned.*

- Black-out in cotton and advanced texture with a distinct, yet random, criss-cross pattern
- White backing for good solar reflection and -absorption properties
- Available also as light filtering



SHANTUNG BO 100022-0008

Optical Information Solar Values

Article number	Colour	Rs %	Ts %	As %
100022-0008	white	75	0	25



PRODUCT CATEGORY
Plains with Texture
MATERIAL
40% viscos/23% polyester/
20% cotton/17% linen
FABRIC WIDTH
205 cm

TWEED BO

100029

Room darkening explicit texture
with both textile depth and
depth of function

TWEED BO is raw room darkening texture. Out of the Plains with Texture family with a unique mix of fibres for a unique feel, making for an almost straw-like surface where the play in the fabric comes from light reflected by several types of textile fibre.

The backing of TWEED BO is white which always translate to high solar reflection value and a contribution to a balanced indoor climate.

In the standard range, TWEED BO comes in white and unbleached. Subject to conditions, and similar to most other fabrics, TWEED BO may be produced in customised colours.

The fabric may be used as verticals and panels subject to conditions.

Product Specification

Design	Studio Almedahls
Product application	
Panels	Yes
Verticals	Yes
Application areas	
Monitor workplace	Yes
Physical properties	
Light transmission	Blackout
Finish	Acrylic coating
Backing	White
Width cm	205 cm
Width inch	80.7 inch
Weight	480 g/m²
Thickness	0,85 mm
Shrinkage	Max 3%
Approx. roll length	30 lm
Turnable fabric	Yes*

Performance characteristics	
Openness faktor	-
Alfa value	0.05
Flame retardant	No
Light fastness	Unbleached 5. Bleached 6
Disinfectable	Yes
Sustainability profile	
Oeko-Tex	Yes
Five Zero Green	Yes
Recycled	No
PVC free	Yes
REACH compliant	Yes

**Please note the direction of the fabric.
Appearance will change when fabric is turned.*

- One of the most explicit textures in the product range
- White backing translating to a balanced indoor climate
- Loaded with function and available as light filtering



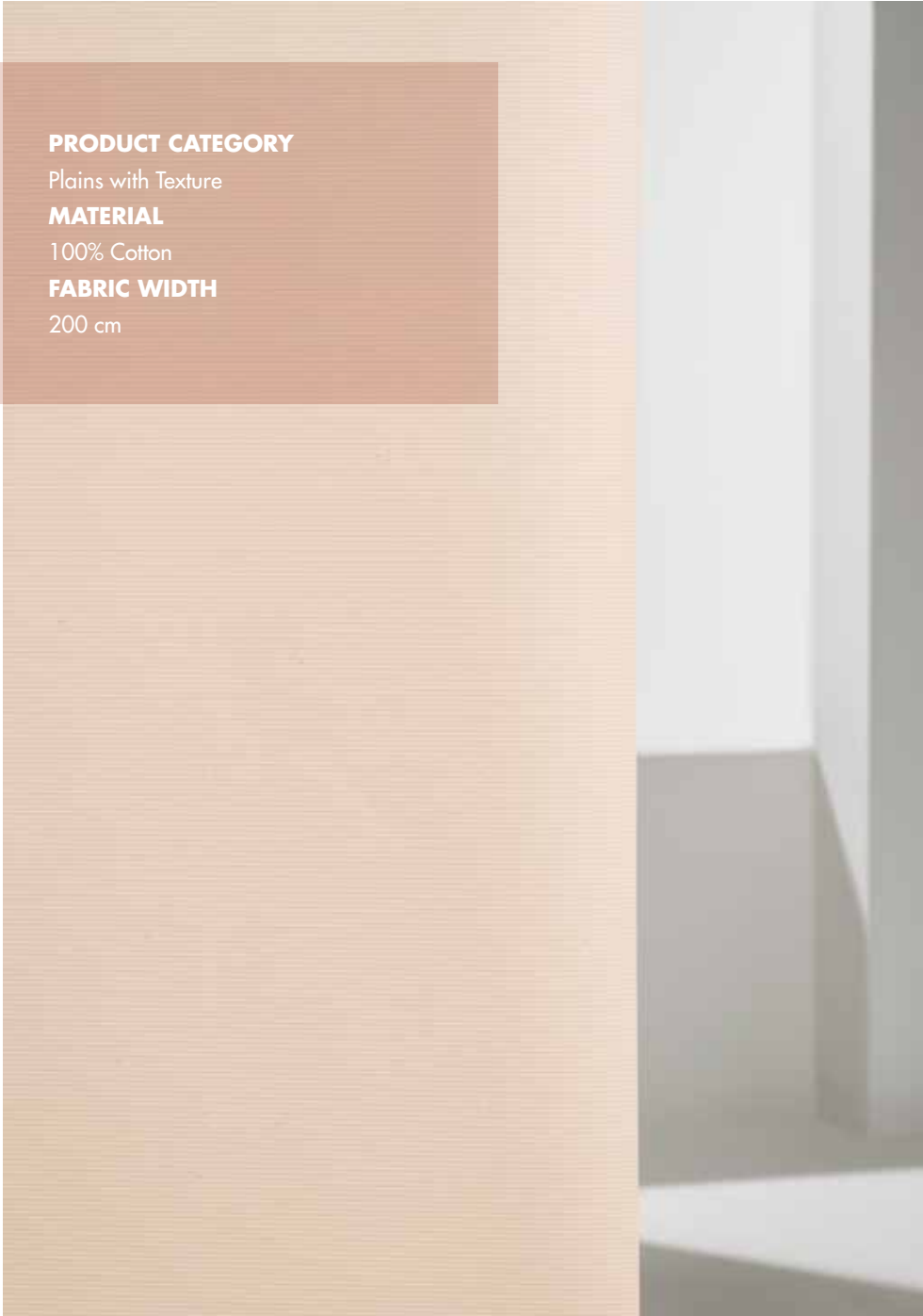
TWEED BO 100029-0008



TWEED BO 100029-0000

Optical Information Solar Values

Article number	Colour	Rs %	Ts %	As %
100029-0000	nature	75	0	25
100029-0008	white	75	0	25



PRODUCT CATEGORY

Plains with Texture

MATERIAL

100% Cotton

FABRIC WIDTH

200 cm

PIQUE BO
100019

Rich cotton texture in black-out
and full technical content

PIQUE BO is the natural, alluring softness of cotton in a highly textured light filtering fabric. Like other natural fibre fabrics from Almedahls, PIQUE BO is offered in white and unbleached. The dominant visual impression in PIQUE BO are the horizontal tight ribbons. Close up, even the vertical stitches in the weave will appear.

With white backing, PIQUE BO delivers high solar reflection value and a meaningful contribution to a balanced indoor climate.

Subject to conditions, PIQUE BO is also suitable for verticals and panels.

Environmentally PIQUE BO is Five Zero Green labelled which, amongst other things, means that the fabric is produced with net zero carbon-dioxide emission.

Product Specification

Design	Studio Almedahls
Product application	
Panels	Yes
Verticals	Yes
Application areas	
Monitor workplace	Yes
Physical properties	
Light transmission	Blackout
Finish	Acrylic coating
Backing	Matching
Width cm	200 cm
Width inch	78.7 inch
Weight	400 g/m²
Thickness	0,6 mm
Shrinkage	Max 1-2%
Approx. roll length	25 lm
Turnable fabric	Yes*
Performance characteristics	
Openness faktor	-
Alfa value	-
Flame retardant	No
Light fastness	Unbleached 4-5. Bleached 6
Disinfectable	No
Sustainability profile	
Oeko-Tex	No
Five Zero Green	Yes
Recycled	No
PVC free	Yes
REACH compliant	Yes

**Please note the direction of the fabric.
Appearance will change when fabric is turned.*

- The natural, alluring softness of cotton texture in a light filtering fabric
- High solar reflection value and meaningful contribution to balanced indoor climate.
- Also in light filtering version



PIQUE BO 100019-0008



PIQUE BO 100019-0000

Optical Information Solar Values

Article number	Colour	Rs %	Ts %	As %
100019-0000	nature	70	0	30
100019-0008	white	75	0	25